

# State of Wyoming Corner Record

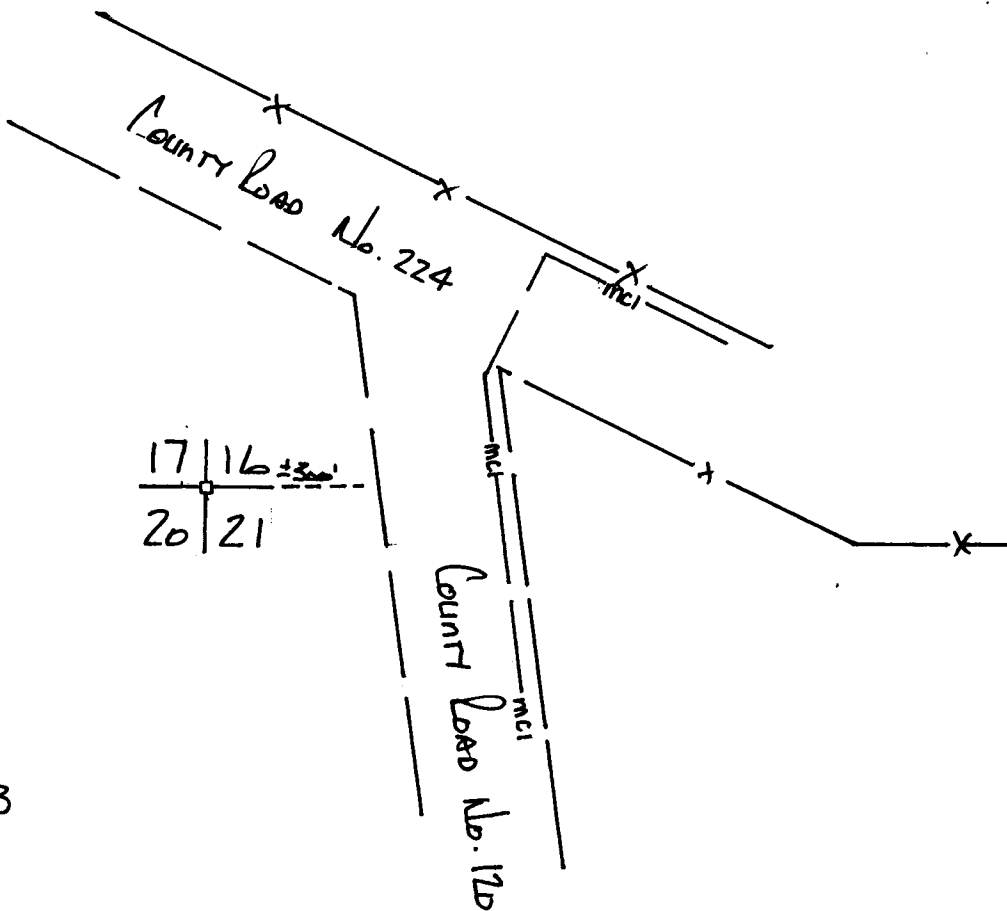
(In compliance with the CORNER PERPETUATION AND FILING ACT, Wyoming Statutes, 1977, Section 36-11-101, et. seq., and the Rules and Regulations of the Board of Registration for Professional Engineers and Professional Land Surveyors)

Reverse side of this form may be used if more space is needed.

Record of original survey and citation of source of historical information (if corner is lost or obliterated). Description of corner monumentation evidence found and/or monument and accessories established to perpetuate the location of this corner. Sketch of relative location of monument, accessories, and reference points with course and distance to adjacent corner(s) (if determined in this survey). Method and rationale for reestablishment of lost or obliterated corner.

RECOVERED 2" X Iron  
AT LOOSE UNMARKED STONE  
SET FENCE POST ALONGSIDE

LARAMIE COUNTY CLERK  
CHEYENNE, WY.  
'97 SEP 24 PM 1 56  
210713

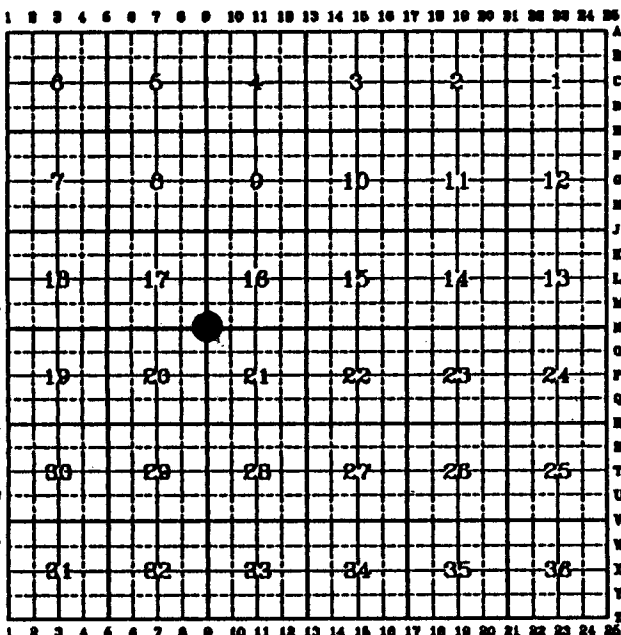


N. 309503.4'  
E 728064.7'  
BASED ON LAD 83 ADS 93  
WYOMING EAST ZONE SPC  
LARAMIE COUNTY WYOMING

T. 16 N., R. 67 W.,

Date of Field Work: \_\_\_\_\_ Office Reference: \_\_\_\_\_

### CROSS INDEX DIAGRAM



Firm/Agency, Address

Worthington, Lenhart & Carpenter, Inc.

200 Pronghorn Street

Casper, Wyoming 82601

Telephone Number: 307-266-2524

This corner record was prepared by me or under my direction and supervision.  
SEAL & SIGNATURE



Corner Name: SW Section: 16 T 16N R 67W; 6th P.M. Cross-Index No.: 119

SBRPEPLS/PLSW: March 1994